

THE RIVERVIEW "B"



:: SPECIFICATIONS

SQUARE FEET: 4,078 SQFT • WITH OPTIONAL MEDIA ROOM: 4,536 SQFT • BEDROOMS: 5 • BATHS: 3 • 2 Story • 2 Car Garage

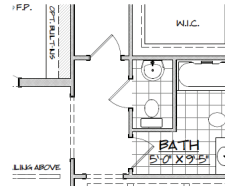
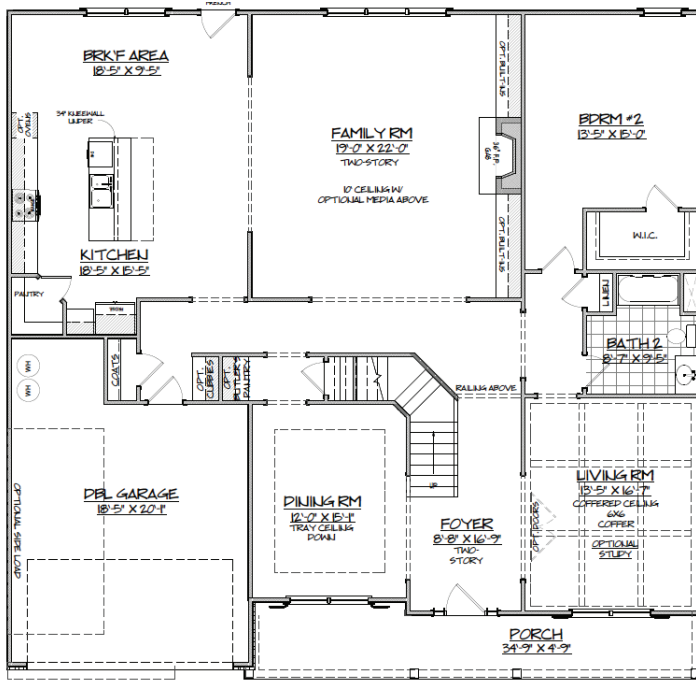
Spend the afternoon lounging on the covered porch in the company of friends and neighbors or invite the group inside to enjoy the open kitchen/family room. A formal living room with coffered ceiling and two-story foyer lend a touch of elegance, while the large dining room makes hosting even large gatherings comfortable. Upstairs, the master bedroom boasts an optional spacious sitting area with optional fireplace and tray ceiling detail. The master bath includes a separate tub and shower and large walk-in closet.

MARKETING COLLATERAL REVISED; 09/30/16.

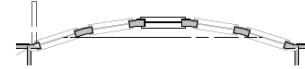
Pictures and other promotional materials are representative and may depict or contain options, upgrades, landscaping, and extra design features that are not included as part of the home and/or may not be available in all communities. Floor plans, elevations, options, home features, and community information are subject to change at any time without notice or obligation. Square footages and dimensions are approximate and may vary in construction and depending on the standard of measurement used, engineering and municipal or other site-specific conditions. All renderings and floor plans are an artist's conceptual drawings and may vary from the actual plans and homes as built, including, without limitation, window, door and other improvement locations and changes required by authority or to accommodate options or value engineering. Further, renderings may not be drawn to scale and homes may be constructed with a floor plan that is the reverse of the rendering. Plans are copyrighted and/or otherwise subject to Trust Homes and cannot be reproduced or copied without its prior written consent. Not an offer or solicitation to sell real property. Offers to sell real property may only be made and accepted at the sales center for individual Trust Homes community associate for details. 2016 Trust Homes Realty Group and Trust Homes Marketing Group. All rights reserved.



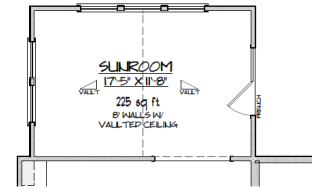
:: FIRST FLOOR ::



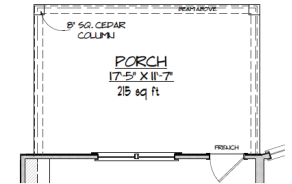
OPTIONAL MASTER BATHROOM WITH 5' SHOWER & EXTENDED VANITY



OPTIONAL FAMILY ROOM BOWED WINDOWS

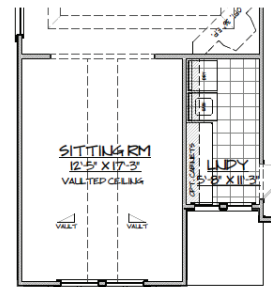
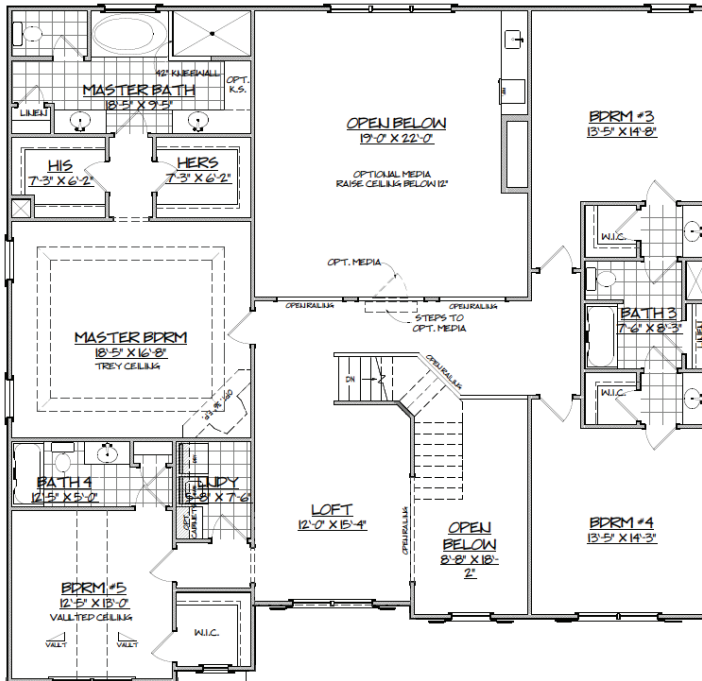


OPTIONAL SUNROOM

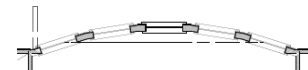


OPTIONAL PORCH

:: SECOND FLOOR ::



OPTIONAL SITTING ROOM IN MASTER



OPTIONAL FAMILY ROOM BOWED WINDOWS

THE RIVERVIEW "B"