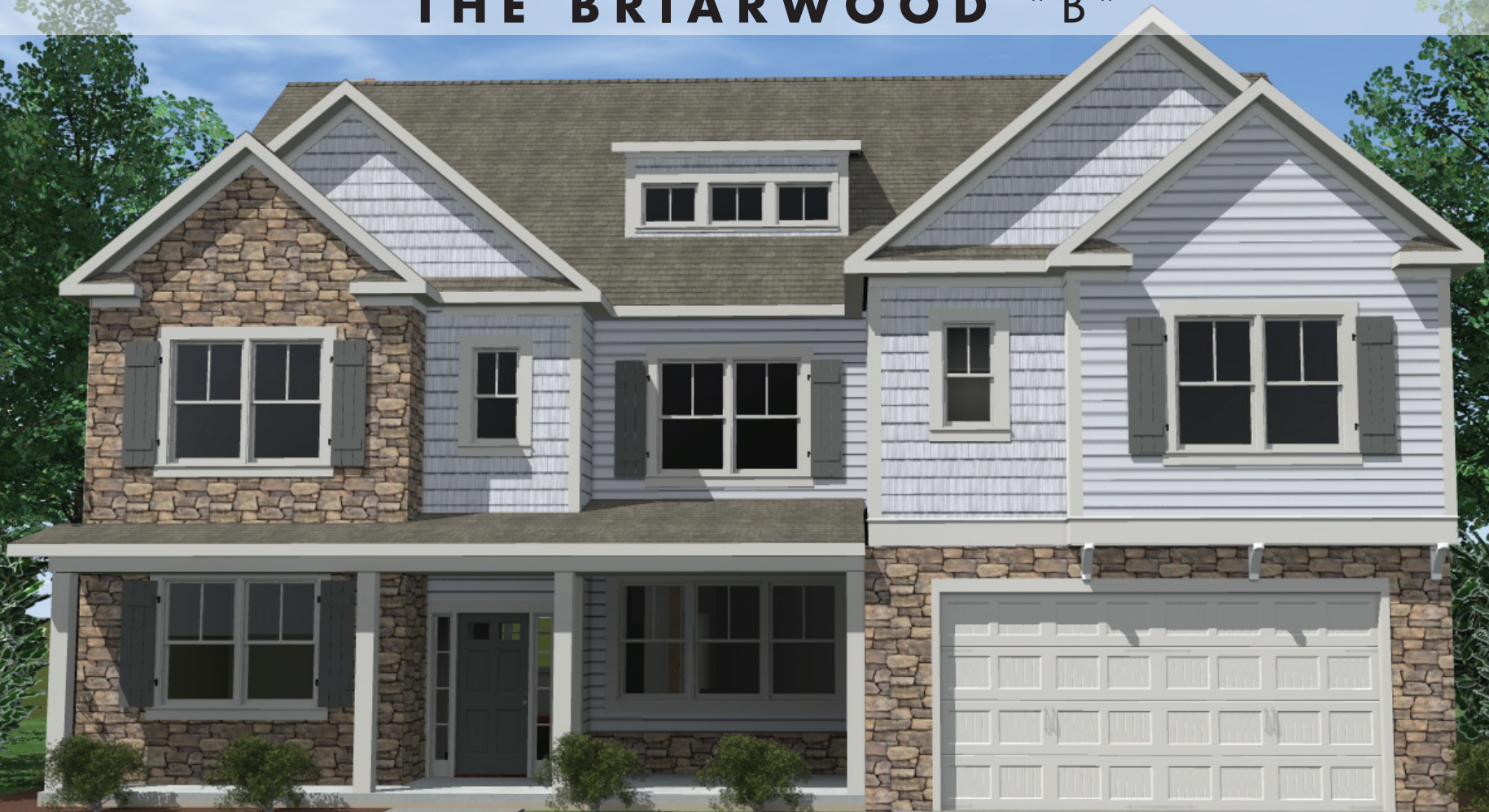


# THE BRIARWOOD "B"



## :: SPECIFICATIONS

SQUARE FEET: 3,861 SQFT • WITH OPTIONAL MEDIA ROOM: 4,238 SQFT • BEDROOMS: 5 • BATHS: 3-1/2 • 2 Story • 2 Car Garage

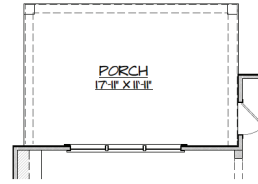
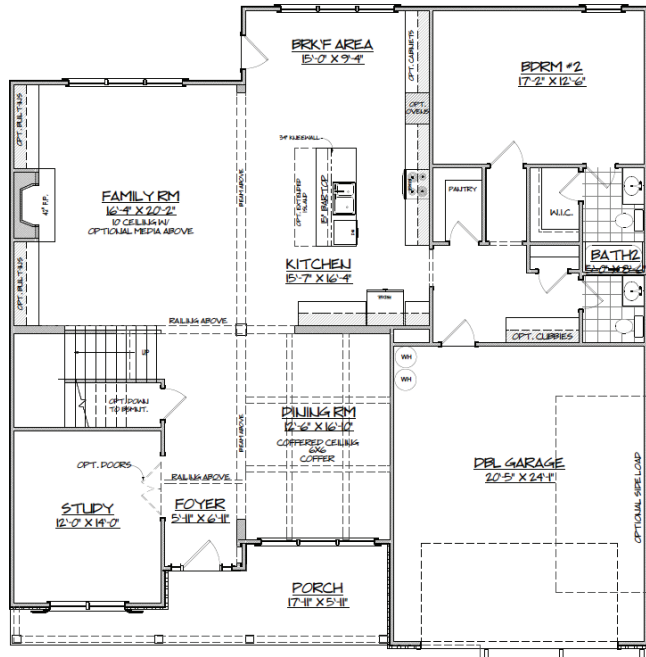
*Put backpacks and boots in their place and keep the main level free of clutter with this home's handy mud hall. Located just off the two-car garage, it's the perfect spot for your car keys or anything you don't want to forget on your way out the door. Upstairs, the large loft space makes a great playroom or home gym. Dust off that old weight set and squeeze a quick workout in without driving to the gym. An open floor plan and two-story living room creates a natural flow and lends itself to modern living.*

### MARKETING COLLATERAL REVISED; 09/30/16.

Pictures and other promotional materials are representative and may depict or contain options, upgrades, landscaping, and extra design features that are not included as part of the home and/or may not be available in all communities. Floor plans, elevations, options, home features, and community information are subject to change at any time without notice or obligation. Square footages and dimensions are approximate and may vary in construction and depending on the standard of measurement used, engineering and municipal or other site-specific conditions. All renderings and floor plans are an artist's conceptual drawings and may vary from the actual plans and homes as built, including, without limitation, window, door and other improvement locations and changes required by authority or to accommodate options or value engineering. Further, renderings may not be drawn to scale and homes may be constructed with a floor plan that is the reverse of the rendering. Plans are copyrighted and/or otherwise subject to Trust Homes and cannot be reproduced or copied without its prior written consent. Not an offer or solicitation to sell real property. Offers to sell real property may only be made and accepted at the sales center for individual Trust Homes community associate for details. 2016 Trust Homes Realty Group and Trust Homes Marketing Group. All rights reserved.

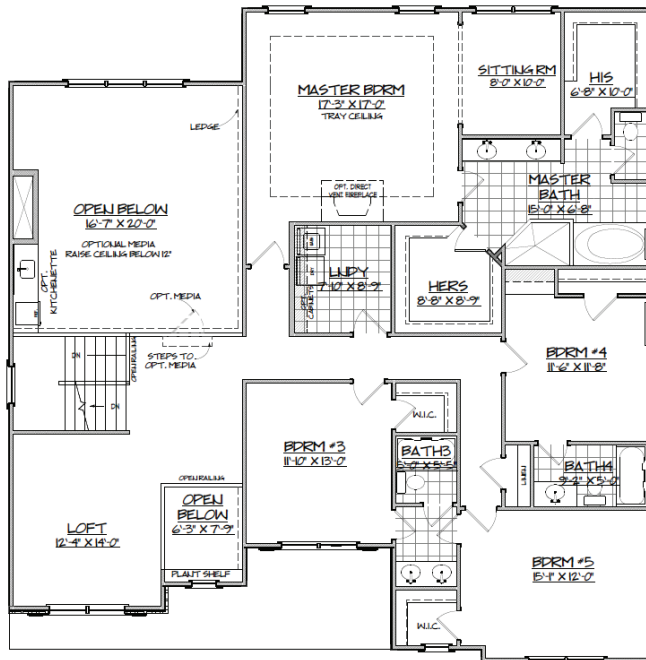


:: FIRST FLOOR ::



OPTIONAL PORCH

:: SECOND FLOOR ::



THE BRIARWOOD "B"