

# THE BRIARWOOD "A"



## :: SPECIFICATIONS

SQUARE FEET: 3,883 SQFT • WITH OPTIONAL MEDIA ROOM: 4,260 SQFT • BEDROOMS: 5 • BATHS: 3-1/2 • 2 Story • 2 Car Garage

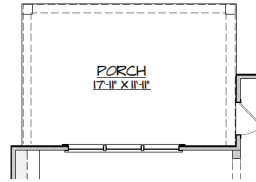
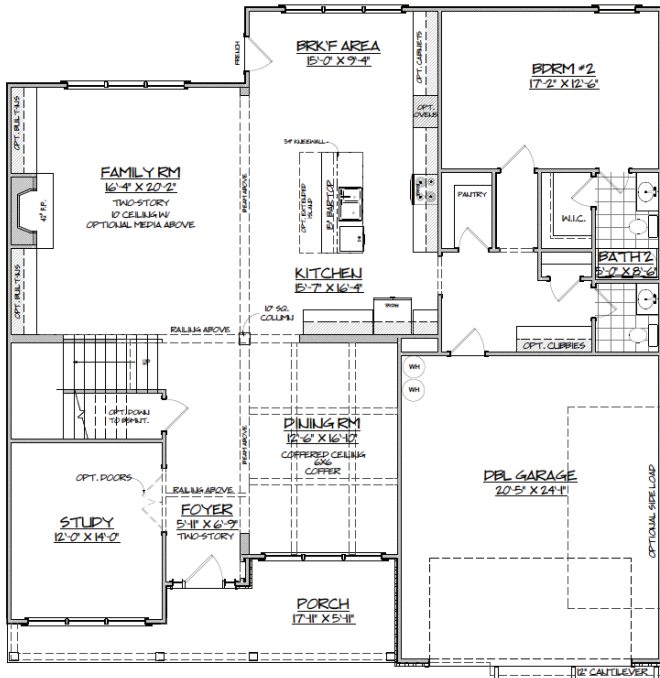
*Go ahead and bid on the sports memorabilia you've been eyeing online. With a huge second floor loft you'll finally have a place to proudly display your team spirit. There's nothing like watching the game surrounded by signed collectibles. Downstairs, whip up snacks in the gourmet kitchen. Plenty of counter space and a large center island means you can tackle that seven layer dip with ease. Back upstairs, the master suite features his-and-hers closets with plenty of room to store all those team jerseys.*

### MARKETING COLLATERAL REVISED; 09/30/16.

Pictures and other promotional materials are representative and may depict or contain options, upgrades, landscaping, and extra design features that are not included as part of the home and/or may not be available in all communities. Floor plans, elevations, options, home features, and community information are subject to change at any time without notice or obligation. Square footages and dimensions are approximate and may vary in construction and depending on the standard of measurement used, engineering and municipal or other site-specific conditions. All renderings and floor plans are an artist's conceptual drawings and may vary from the actual plans and homes as built, including, without limitation, window, door and other improvement locations and changes required by authority or to accommodate options or value engineering. Further, renderings may not be drawn to scale and homes may be constructed with a floor plan that is the reverse of the rendering. Plans are copyrighted and/or otherwise subject to Trust Homes and cannot be reproduced or copied without its prior written consent. Not an offer or solicitation to sell real property. Offers to sell real property may only be made and accepted at the sales center for individual Trust Homes community associate for details. 2016 Trust Homes Realty Group and Trust Homes Marketing Group. All rights reserved.

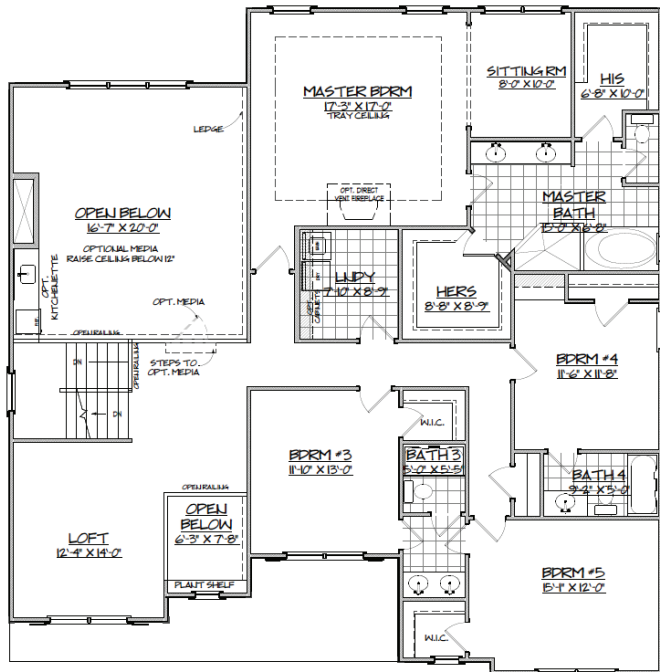


:: FIRST FLOOR ::



OPTIONAL PORCH

:: SECOND FLOOR ::



THE BRIARWOOD "A"