

THE AZALEA "B"



:: SPECIFICATIONS

SQUARE FEET: 3,006 SQFT • WITH OPTIONAL MEDIA ROOM: 3,255 SQFT • BEDROOMS: 5 • BATHS: 3-1/2 • 2 Story • 2 Car Garage

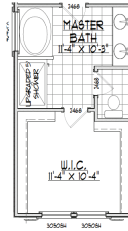
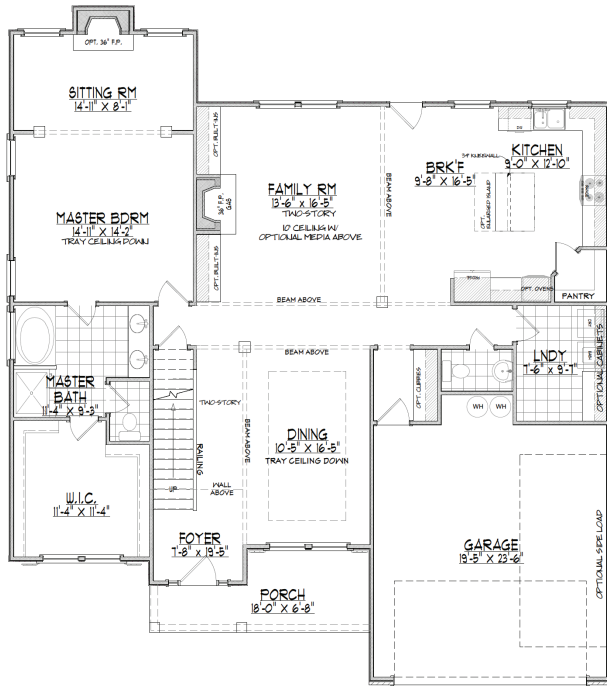
A grand two-story foyer and formal living make an impactful first impression in this home. The open concept main level includes a spacious kitchen that opens into the two-story family room and eat-in breakfast space, perfect for those busy weekday mornings. A first-floor master offers privacy and separation from the upstairs bedrooms. You'll appreciate the sizeable walk-in closet and separate tub/shower. A sitting room and tray ceiling gives the space a touch of elegance.

MARKETING COLLATERAL REVISED; 09/29/16.

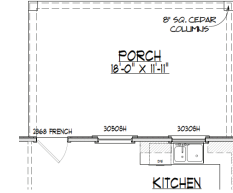
Pictures and other promotional materials are representative and may depict or contain options, upgrades, landscaping, and extra design features that are not included as part of the home and/or may not be available in all communities. Floor plans, elevations, options, home features, and community information are subject to change at any time without notice or obligation. Square footages and dimensions are approximate and may vary in construction and depending on the standard of measurement used, engineering and municipal or other site-specific conditions. All renderings and floor plans are an artist's conceptual drawings and may vary from the actual plans and homes as built, including, without limitation, window, door and other improvement locations and changes required by authority or to accommodate options or value engineering. Further, renderings may not be drawn to scale and homes may be constructed with a floor plan that is the reverse of the rendering. Plans are copyrighted and/or otherwise subject to Trust Homes and cannot be reproduced or copied without its prior written consent. Not an offer or solicitation to sell real property. Offers to sell real property may only be made and accepted at the sales center for individual Trust Homes community associate for details. 2016 Trust Homes Realty Group and Trust Homes Marketing Group. All rights reserved.

**TRUST
HOMES**
You'll feel home with **us.**

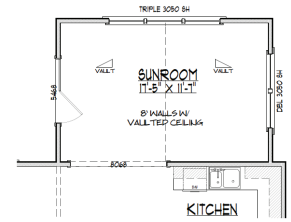
:: FIRST FLOOR ::



OPTIONAL MASTER BATHROOM WITH 5' SHOWER & EXTENDED VANITY

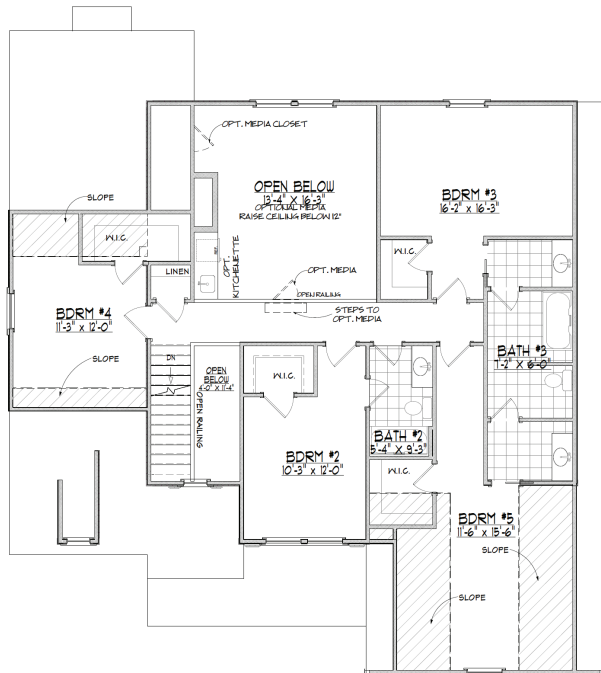


OPTIONAL PORCH



OPTIONAL SUNROOM

:: SECOND FLOOR ::



THE AZALEA "B"