

# THE AZALEA "A"



## :: SPECIFICATIONS

SQUARE FEET: 3,006 SQFT • WITH OPTIONAL MEDIA ROOM: 3,255 SQFT • BEDROOMS: 5 • BATHS: 3-1/2 • 2 Story • 2 Car Garage

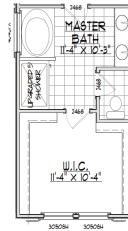
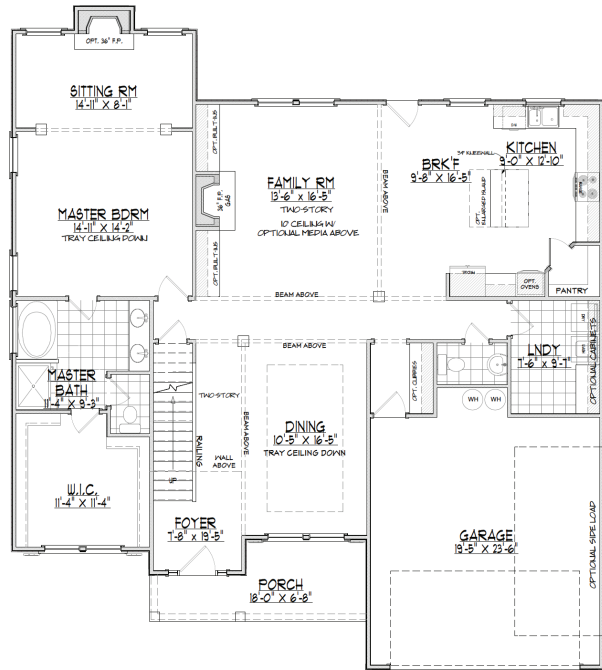
*A huge walk-in closet in the first floor owner's suite helps to fuel your online shopping habit. Plenty of shelf space means you can go ahead and splurge on the new shoes you've been eyeing. The master bath features dual vanities and a separate tub and shower to streamline busy mornings. A two-story family room opens into the kitchen/breakfast area, creating a great meal and entertainment space. Upstairs, four more bedrooms and two additional full baths comfortably accommodate the whole family and any guests.*

### MARKETING COLLATERAL REVISED; 09/29/16.

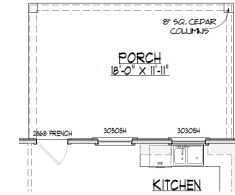
Pictures and other promotional materials are representative and may depict or contain options, upgrades, landscaping, and extra design features that are not included as part of the home and/or may not be available in all communities. Floor plans, elevations, options, home features, and community information are subject to change at any time without notice or obligation. Square footages and dimensions are approximate and may vary in construction and depending on the standard of measurement used, engineering and municipal or other site-specific conditions. All renderings and floor plans are an artist's conceptual drawings and may vary from the actual plans and homes as built, including, without limitation, window, door and other improvement locations and changes required by authority or to accommodate options or value engineering. Further, renderings may not be drawn to scale and homes may be constructed with a floor plan that is the reverse of the rendering. Plans are copyrighted and/or otherwise subject to Trust Homes and cannot be reproduced or copied without its prior written consent. Not an offer or solicitation to sell real property. Offers to sell real property may only be made and accepted at the sales center for individual Trust Homes community associate for details. 2016 Trust Homes Realty Group and Trust Homes Marketing Group. All rights reserved.

**TRUST  
HOMES**  
You'll feel home with **us.**

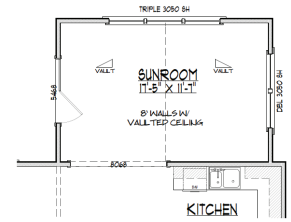
:: FIRST FLOOR ::



OPTIONAL MASTER BATHROOM WITH 5' SHOWER & EXTENDED VANITY

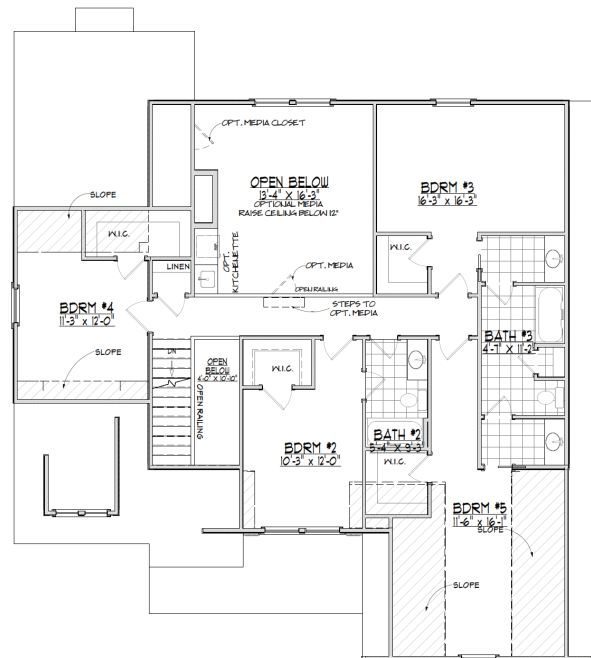


OPTIONAL PORCH



OPTIONAL SUNROOM

:: SECOND FLOOR ::



THE AZALEA "A"