

# THE ASPEN "A"



## :: SPECIFICATIONS

SQUARE FEET: 3,293 SQFT • WITH OPTIONAL MEDIA ROOM: 3,650 SQFT • BEDROOMS: 5 • BATHS: 3-1/2 • 2 Story • 2 Car Garage

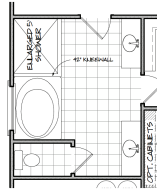
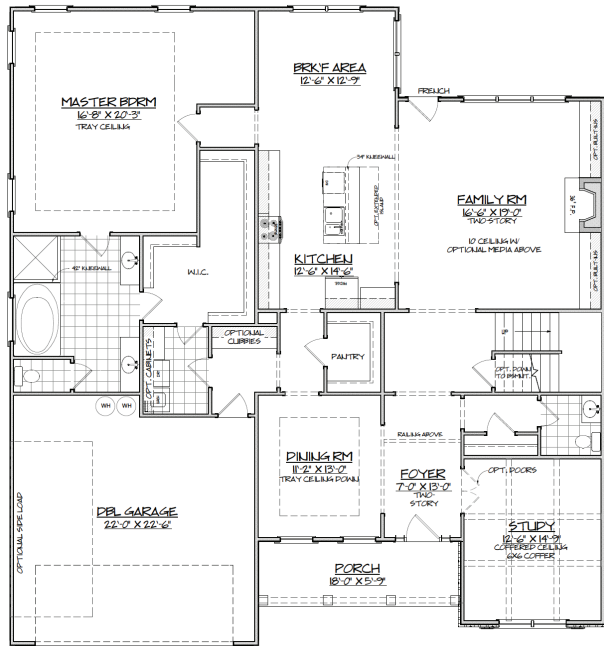
*Toss those takeout menus — with a spacious gourmet kitchen and large pantry, preparing meals at home is enjoyable and easy. An open floor plan with clear sight lines into the family room keeps the cook from missing out. The two-story living room with fireplace is great for hosting guests or relaxing with family. Upstairs, the optional media room makes an ideal battle ground for your next video game or scrabble tournament. The main level master suite includes a roomy bathroom and giant walk-in closet.*

### MARKETING COLLATERAL REVISED; 09/29/16.

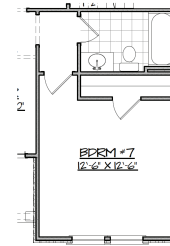
Pictures and other promotional materials are representative and may depict or contain options, upgrades, landscaping, and extra design features that are not included as part of the home and/or may not be available in all communities. Floor plans, elevations, options, home features, and community information are subject to change at any time without notice or obligation. Square footages and dimensions are approximate and may vary in construction and depending on the standard of measurement used, engineering and municipal or other site-specific conditions. All renderings and floor plans are an artist's conceptual drawings and may vary from the actual plans and homes as built, including, without limitation, window, door and other improvement locations and changes required by authority or to accommodate options or value engineering. Further, renderings may not be drawn to scale and homes may be constructed with a floor plan that is the reverse of the rendering. Plans are copyrighted and/or otherwise subject to Trust Homes and cannot be reproduced or copied without its prior written consent. Not an offer or solicitation to sell real property. Offers to sell real property may only be made and accepted at the sales center for individual Trust Homes community associate for details. 2016 Trust Homes Realty Group and Trust Homes Marketing Group. All rights reserved.

  
**TRUST  
HOMES**  
You'll feel home with **us.**

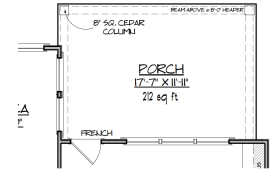
:: FIRST FLOOR ::



OPTIONAL MASTER BATHROOM WITH 5' SHOWER & EXTENDED VANITY

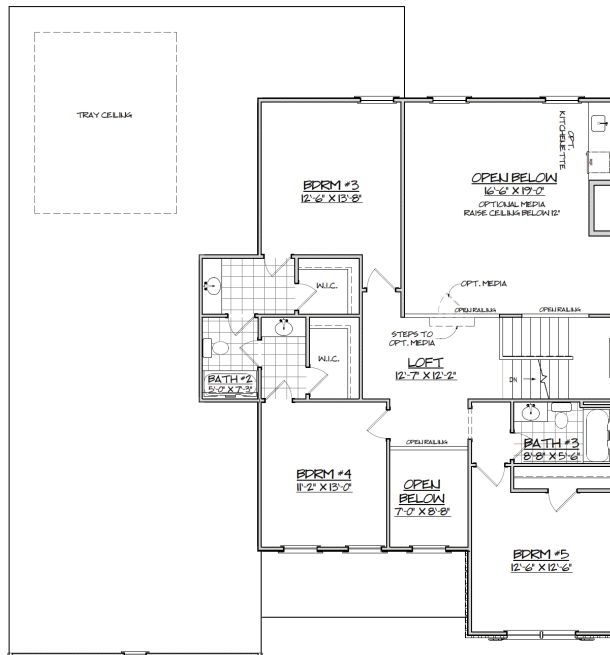


OPTIONAL BEDROOM



OPTIONAL PORCH

:: SECOND FLOOR ::



THE ASPEN "A"